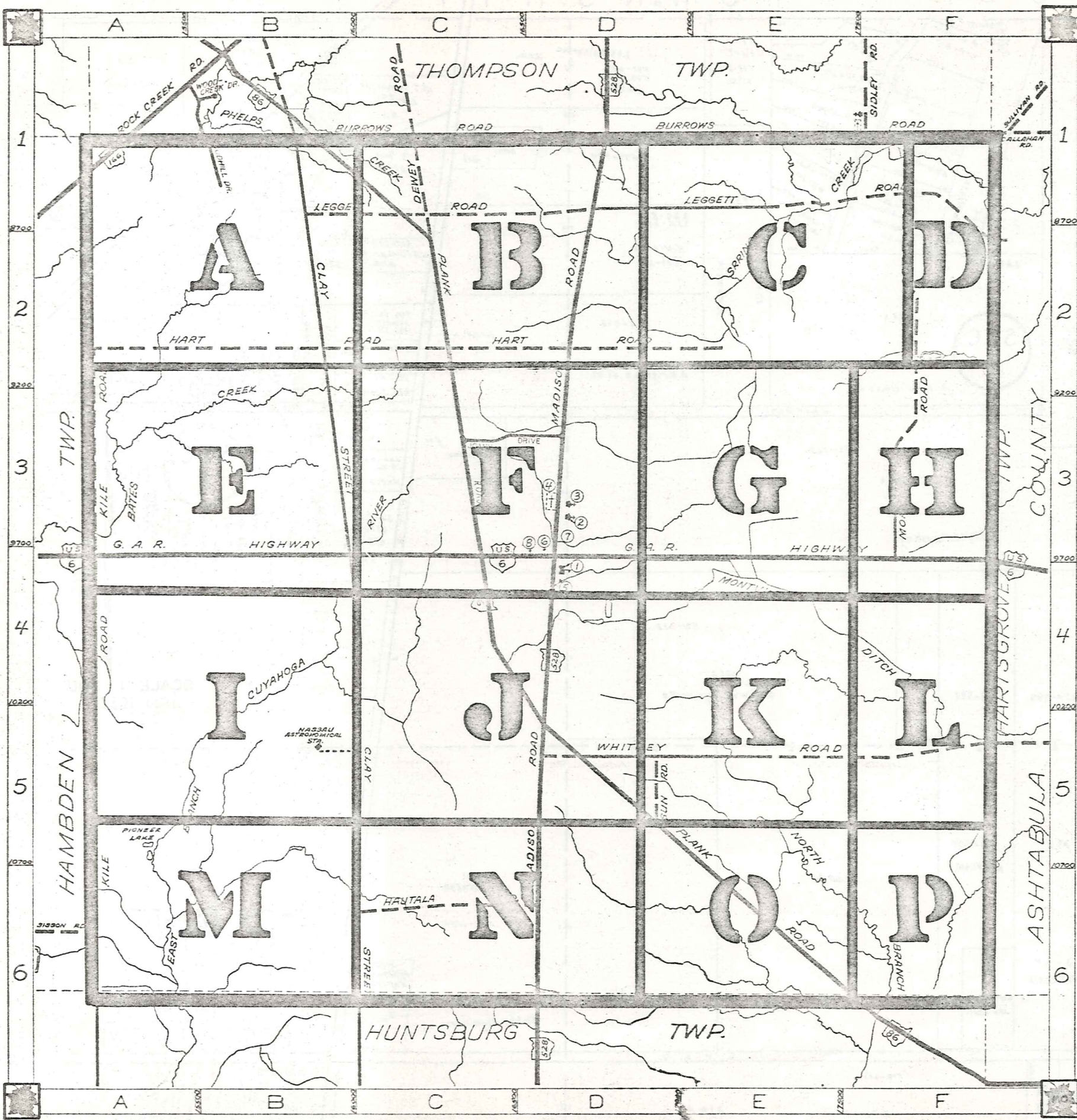


ROAD INDEX



A	I	R	ROCK CREEK RD. A1
	J		JOANN DRIVE C-3
B	K	S	BURROWS RD. BI-FI KILE ROAD A2-A6 SUN ROAD D5
	L	T	CLAY STREET BI-C6 LEGGETT RD. BI-F2
C	M	U	DEWEY ROAD CI MADISON RD. DI-D6 MORGAN RD. FI-F3 MURPHY RD. FI
	N	V	
D		W	WHITNEY RD. D5-F5 WOODHILL DR. B1
	O	X	
E		Y	
	P	Z	
F			
	Q		
G			
H			
I			
J			
K			
L			
M			
N			
O			
P			

- ① MONTVILLE ELEM. SCHOOL
- ② COMMUNITY CHURCH
- ③ MONTVILLE METHODIST CHURCH
- ④ MONTVILLE CEMETERY
- ⑤ MONTVILLE VOL FIRE DEPT.
- ⑥ UNITED STATES POST OFFICE
- ⑦ MONTVILLE TOWN HALL
- ⑧ STATE HIGHWAY GARAGE (SUB STATION)

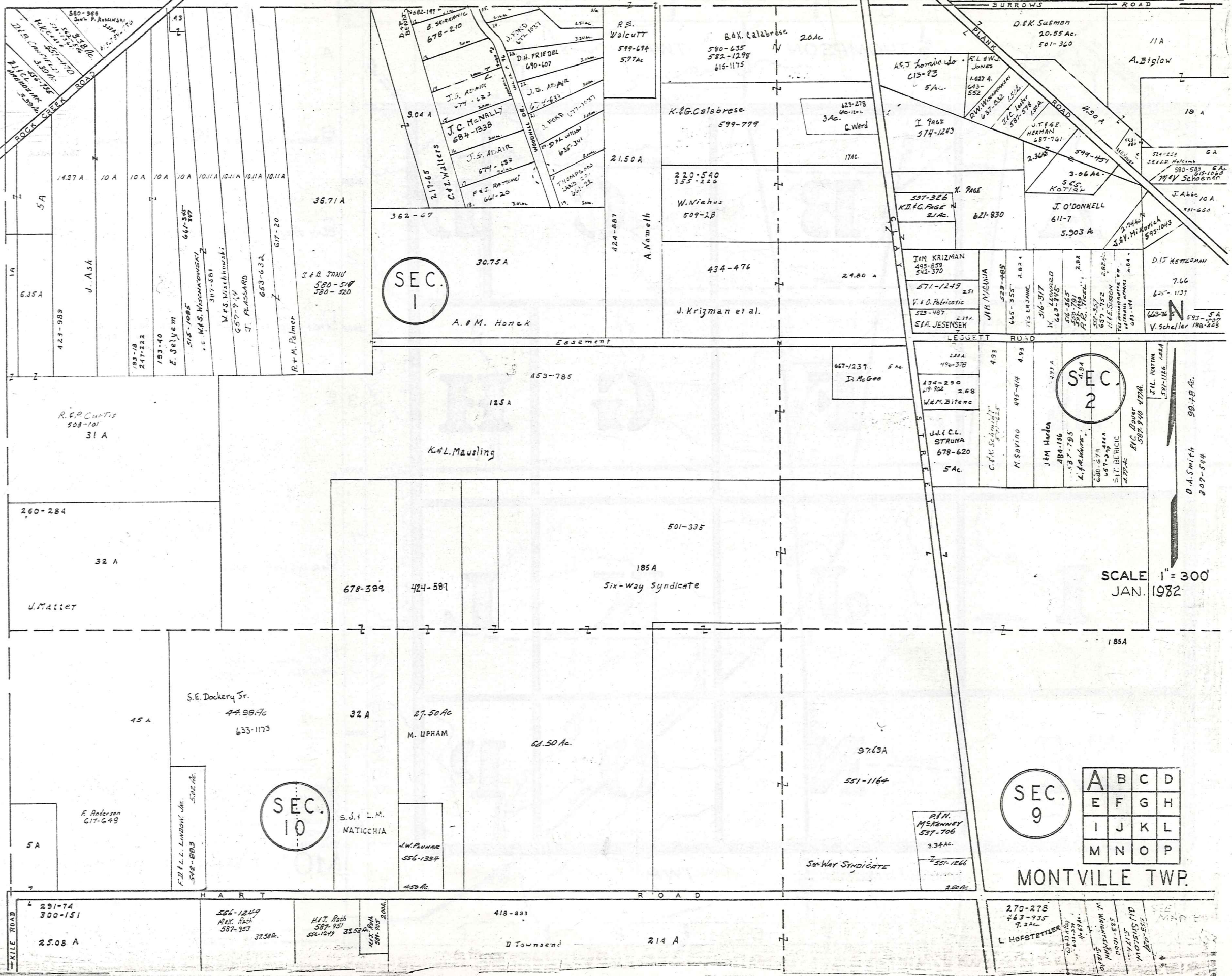
MONTVILLE TOWNSHIP

SCALE: 1" = 2000'
 ROBERTE. PHILLIPS,
 GEauga COUNTY ENGINEER

--- UNPAVED ROADS
 --- PAVED ROADS
 --- TOWNSHIP LINE
 --- COUNTY LINE

THOMPSON TOWNSHIP

HAMBDEN TOWNSHIP



SEC. 1

SEC. 2

SEC. 9

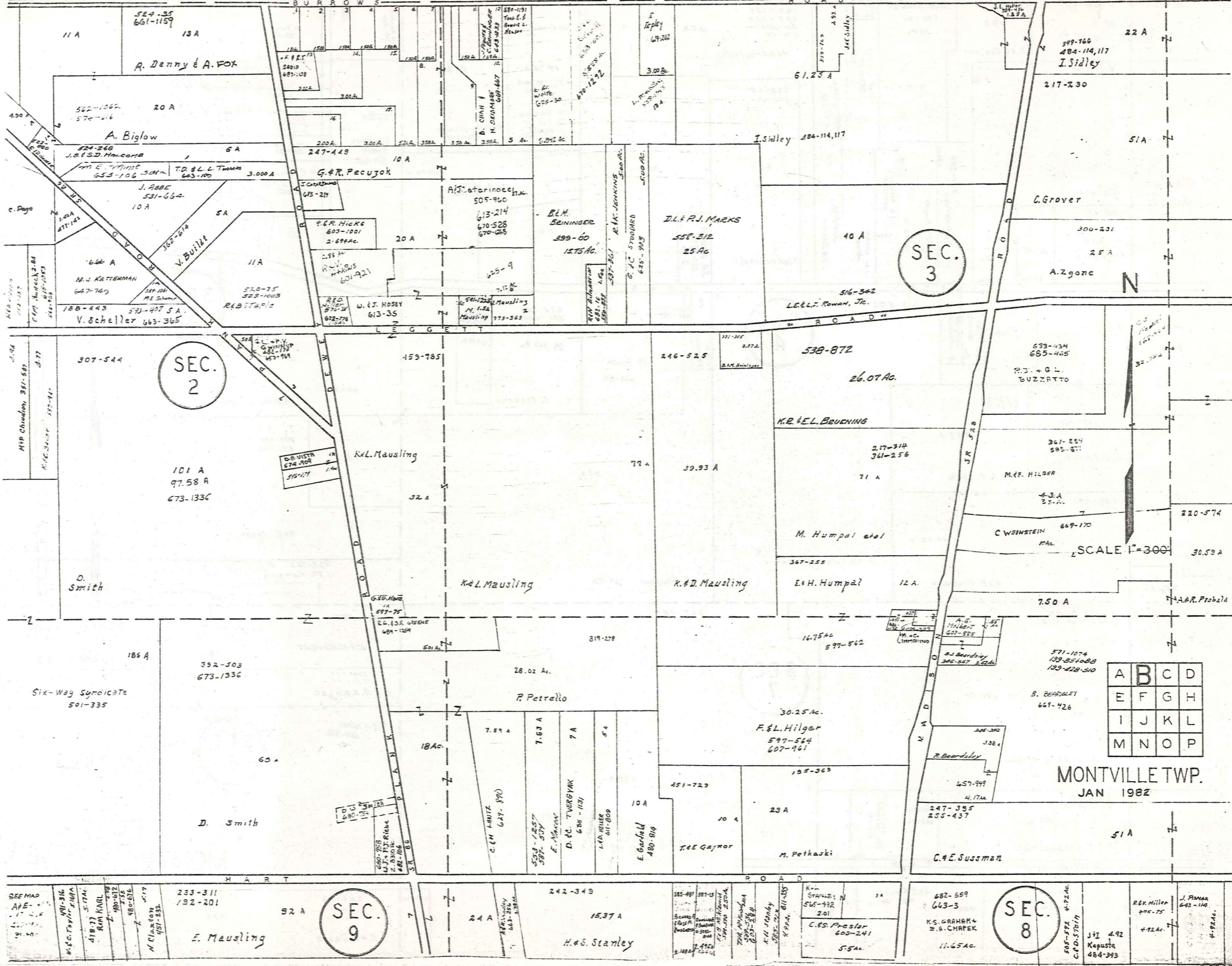
SEC. 10

A	B	C	D
E	F	G	H
I	J	K	L
M	N	O	P

MONTVILLE TWP.

SCALE 1" = 300' JAN. 1982

T H O M P S O N T O W N S H I P



SEC. 2

SEC. 3

SEC. 9

A	B	C	D
E	F	G	H
I	J	K	L
M	N	O	P

MONTVILLE TWP.
JAN 1982

SEE MAP
A-E
1-10
1980

SEC. 8

R.B. Miller
400-75
4-92 Ac.
J. P. Sear
643-110
4-92 Ac.

682-559
643-3
K.S. GRAHAM
R.A. CHAFER
11.65 Ac.

STARLEY N
565-992
2.01
C.S. Preslar
605-241
5.5 Ac.

585-481
587-15
588-10
589-10
590-10
591-10
592-10
593-10
594-10
595-10
596-10
597-10
598-10
599-10
600-10

242-349
15.37 A
H. & S. Stanley

24 A
R.A. Stanley
603-280
3.88 Ac.

233-311
192-201
52 A
E. Mausling

247-385
255-437
C. & E. Sussman

451-729
10 A
T. & E. Gaynor

195-369
23 A
M. Petkaski

480-814
10 A
E. Garfield

636-1151
7 A
D. P. TVERGYAK

647-870
7.59 A
C. M. LARITE

392-503
673-1336
65 A
D. Smith

185 A
Six-Way Syndicate
501-335

571-1074
129-85108B
129-428-510
B. BEARDSLEY
661-426

346-382
338 A
R. Beardsley

1675 Ac
597-562
E. H. Humpal

30.25 Ac.
F. & L. Hilgar
597-564
607-961

319-278
28.02 Ac.
R. Petrallo

648-1100
10 A
697-78

101 A
97.58 A
673-1336
D. Smith

307-544
D. Smith

7.50 A
A.A.R. Probal

669-170
10 Ac.
C. WEINSTEIN

367-255
12 A
E. H. Humpal

39.93 A
K. & D. Mausling

32 A
K. & L. Mausling

32 A
K. & L. Mausling

101 A
97.58 A
673-1336
D. Smith

307-544
D. Smith

361-254
593-87
M. F. HILGER

217-714
361-256
71 A
M. Humpal et al

26.07 Ac.
K. R. & E. L. BEUENING

79 A
K. & L. Mausling

32 A
K. & L. Mausling

32 A
K. & L. Mausling

101 A
97.58 A
673-1336
D. Smith

307-544
D. Smith

633-434
685-465
R. J. & G. L. BUZZATTO

538-872
26.07 Ac.

246-525
39.93 A
K. & D. Mausling

79 A
K. & L. Mausling

32 A
K. & L. Mausling

32 A
K. & L. Mausling

101 A
97.58 A
673-1336
D. Smith

307-544
D. Smith

300-231
25 A
A. Zgone

516-342
L. E. & J. Rowan, Jr.

40 A
D. L. R. MARKS
558-312
25 Ac.

1275 Ac.
B. L. M. BRUNGER
399-60

20 A
P. R. Hicke
603-1001
2.69 Ac.

20 A
P. R. Hicke
603-1001
2.69 Ac.

101 A
97.58 A
673-1336
D. Smith

307-544
D. Smith

217-230
51 A
C. Grover

284-114,117
I. Sidley

217-230
51 A
C. Grover

217-230
51 A
C. Grover

217-230
51 A
C. Grover

217-230
51 A
C. Grover

101 A
97.58 A
673-1336
D. Smith

307-544
D. Smith

399-766
484-114,117
I. Sidley

399-766
484-114,117
I. Sidley

399-766
484-114,117
I. Sidley

399-766
484-114,117
I. Sidley

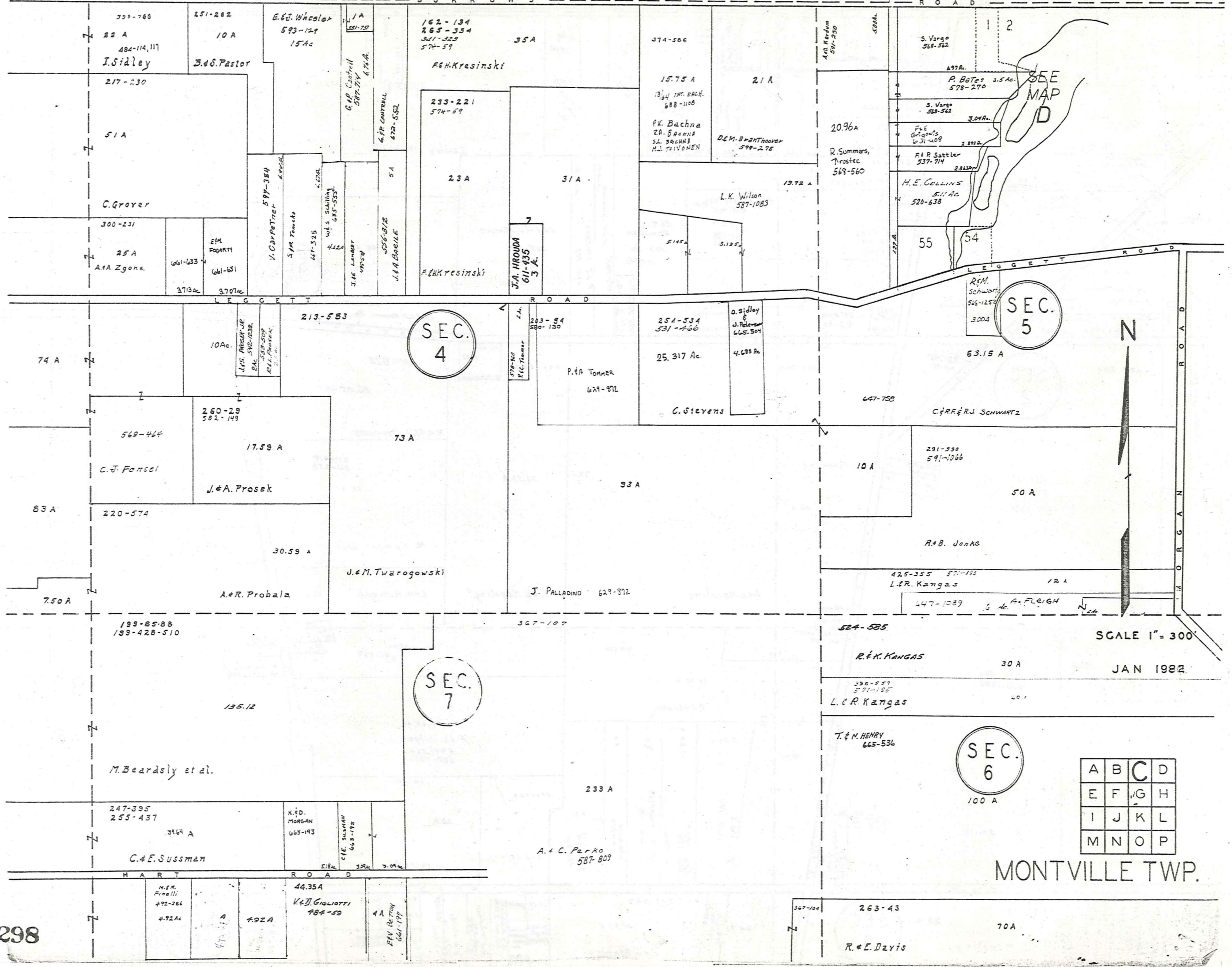
399-766
484-114,117
I. Sidley

399-766
484-114,117
I. Sidley

101 A
97.58 A
673-1336
D. Smith

307-544
D. Smith

T H O M P S O N T O W N S H I P



SEE MAP D

SEC. 4

SEC. 5

SEC. 7

SEC. 6

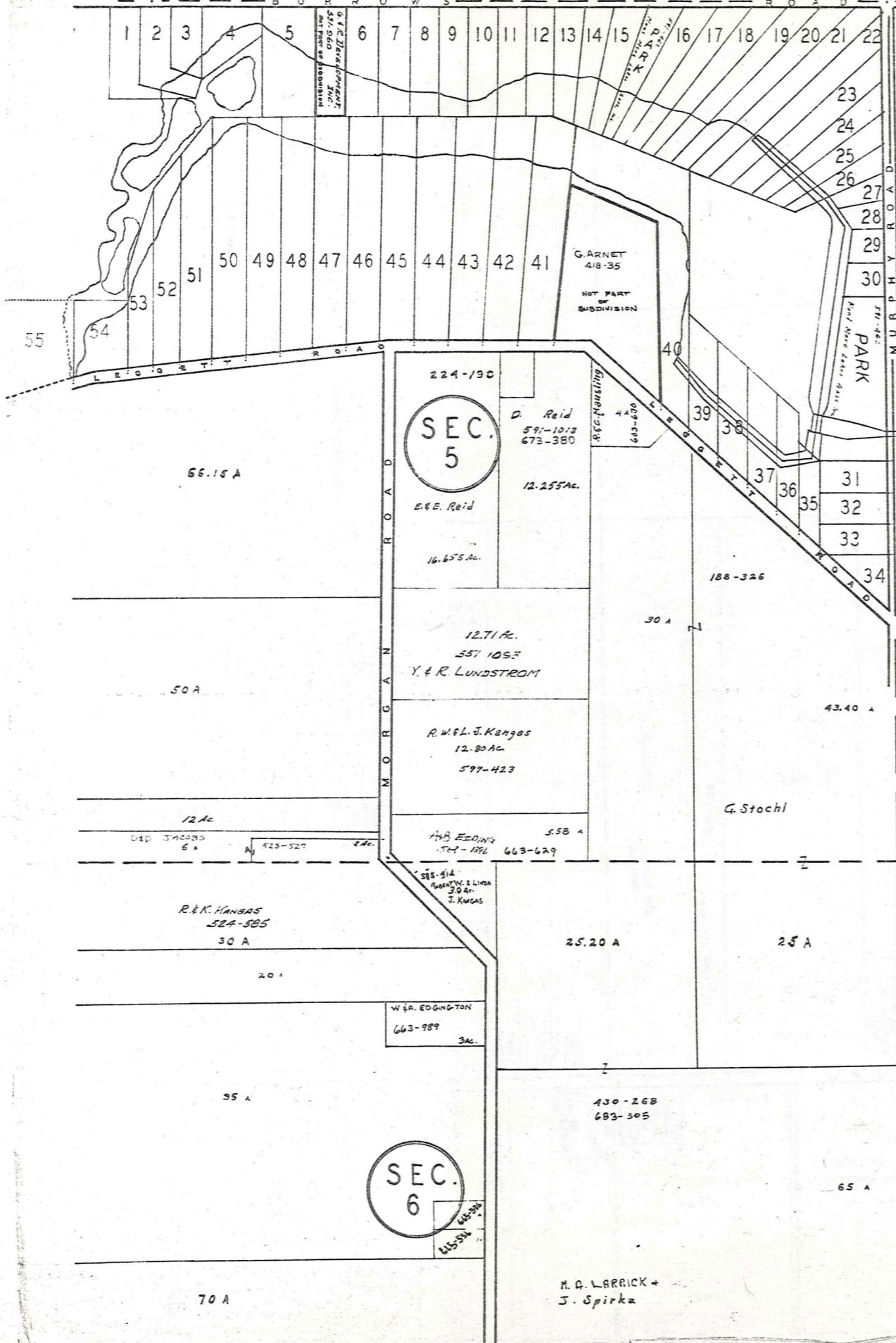
A	B	C	D
E	F	G	H
I	J	K	L
M	N	O	P

SCALE 1" = 300'

JAN 1982

MONTVILLE TWP.

T H O M P S O N T O W N S H I P



MONT-MERE COLONY
SUBDIVISION ONE - VOL. 9 - P. 96

1	J. H. MURRAY	567-363
2	M. B. NUTTING	551-1053
3	M. B. NUTTING	551-1053
4	M. B. NUTTING	551-1053
5	G. S. SUBACK	647-1020
6		
7	D. W. H. W. H.	551-1053
8	K. E. TENTEN	621-242
9	E. J. H. H. H.	574-1053
10	J. E. C. C. C.	574-1053
11	S. C. LIPKA	617-340
12	G. H. LIPKA	523-1041
13	L. L. SURYANO	631-103
14	J. S. VIGNONIS	630-510
15	J. W. SCARFEM	552-107
16	M. H. H. H. H.	552-107
17	R. Goldthorpe	552-107
18	M. B. UNBEL	583-1053
19	J. TELONIC	653-601
20	G. S. GROUDLE	580-814
21	T. M. V. V. V.	661-716
22	W. E. A. WRIGHT	667-318
23		
24	R. D. CONKLIN	540-3-2
25		
26	T. P. H. H. H.	
27	G. H. H. H. H.	633-1053
28	W. K. AMUND	681-1056
29	R. E. STRONG	602-1066
30	J. E. F. F. F.	574-1053
31	D. KINGSLAND	676-611
32	A. J. M. M. ANDRUS	642-914
33	L. L. G. G. G.	562-428
34	P. H. H. H. H.	531-880
35	E. H. H. H. H.	647-348
36	E. H. H. H. H.	647-348
37	K. L. A. A. BRAND	625-123
38	S. F. H. H. H.	625-123
39	A. H. H. H. H.	650-913
40	Steve Koper	597-427
41		
42	D. E. H. H. H.	578-1053
43	R. E. M. KNOB	597-342
44	H. E. N. H. H.	593-128
45	D. T. R. R. R.	604-378
46		
47	H. E. P. W. H.	611-112
48	C. E. D. M. BRIDE	580-416
49	P. E. D. H. H.	571-1053
50	R. H. H. H. H.	641-297
51	D. F. D. H. H.	571-1053
52	R. H. B. Temple	557-1076
53	J. A. Peterson	647-492
54	T. O. K. H. H. H.	641-828
55	L. H. W. H. H.	641-1017



SCALE 1" = 300'
JAN 1982

A	B	C	D
E	F	G	H
I	J	K	L
M	N	O	P

H A M B D E N T O W N S H I P

281-74
300-151
25.08 A
W. Pastula
532-485
G.L. White
W. FARRINGTON
R.C. MINNICK
J. LORCA

M.K. Roth
H.J. Roth
556-1249
587-955
3758 Ac.

451-940
SEC. 10
214 A
R.B. Townsend

SEC. 9

270-478
463-918
L. HOFSTETTLER
9.3 Ac.

5 Pies
30.12 Ac.
312-444
452-1016
25 A
25.16 A
C. Homeier

260-469
100 A
H. Flippi

35.25 A
R.B. Townsend
37.75 A
W.C. Frank
486-919
SCALE 1"=300'

2.71 A
J.J. NINGARD JR.
611-1276
J.L. NAGY
J.K. Artzner
M. Tripodo
S. Tripodo
8.78 A
M. Yaromay
8.79 A
F. Metzger
8.75 A
A.M. Jannica
8.74 A
V.M. Koglovich
8.73 A
J.E.M. KORTIS
8.72 A
A.J. Cerne

285-577
578-323
515-736
JOHN HILLINGER
38.18+ A.
43.77 A
C.S. Heath
601-521
603-1035
46 A
SEC. 11
663-430
Afs. Pircenski

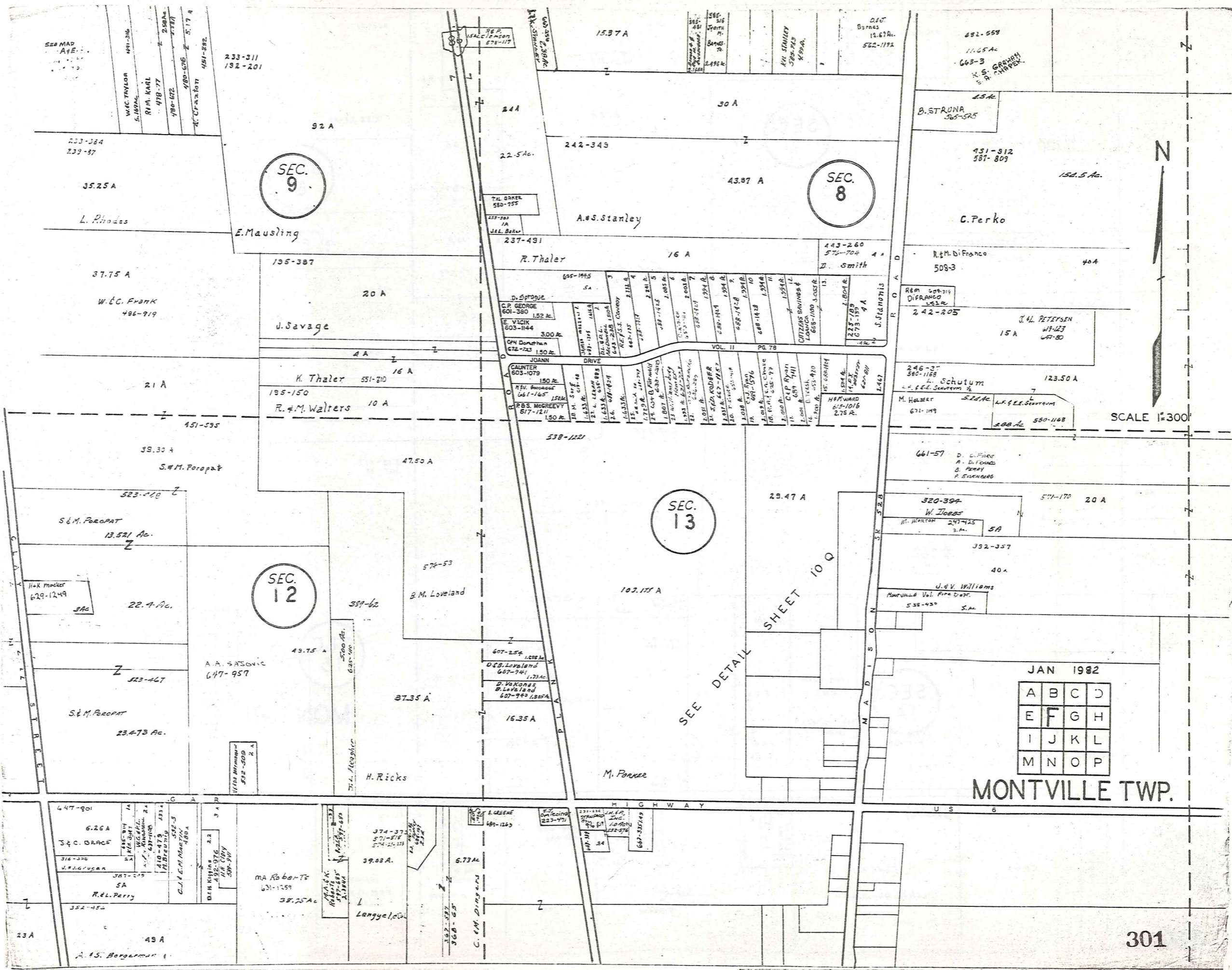
11.02 A
K. Townsend
663-90
263-11
A.E. Schley
5 A
523-948
5.73 Ac.
A B C D
E F G H
I J K L
M N O P
105 A
G. Davis
629-90
218-117
28.07 A
SEC. 12
G.F. Davis
589-923
E. Hegeus

254-115
3.92 A
R.L. Cryston
316-348
665-1111
D. Popp
39.42 A.
R.C. Bernardelli

220-614
72.70 A
R.J. Miller
25 A
J.F. WINTERS
611-550
25 A
R. LEWANSKI
477-678
A.L. Gincas
47 A
R. Turner

224-248
52 A
27 A
23 Ac.
229-902
523-692
E. Di Donato
H.M. Boesger Jr.
601-712
14.20 A
G. Eyring
591-1200
12.74 A
6.26 A

MONTVILLE TWP.
JAN 1982



SEC. 9

SEC. 8

SEC. 13

SEC. 12

MONTVILLE TWP.

JAN 1982

A	B	C	D
E	F	G	H
I	J	K	L
M	N	O	P

SCALE 1"=300'



SEE DETAIL SHEET 10 Q

SEE MAP A+E
WAC. TAYLOR 491-316
S.1874
RIM. KARL 478-77
490-672
490-676
491-282

233-311
192-201

233-384
239-87

35.25 A

L. Rhodes

37.75 A

W.C. Frank
486-919

21 A

451-555

39.30 A

S.M. Poropat

523-418

S.M. Poropat
13.521 Ac.

H.K. Macker
629-1249
3 AC

22.4 Ac.

523-467

S.M. Poropat
23.473 Ac.

A.A. SASONIC
647-957

49.75 A

589-62

574-53

B.M. Loveland

37.35 A

H. Ricks

W100 MONTVILLE
582-580
2 A

15.37 A

244

22.5 Ac.

242-343

A.S. Stanley

TAL BAKER
580-755

235-283
1A
JEL. BAKER

237-491

R. Thaler

16 A

443-260
575-704
D. Smith

D. SPTORJE
601-380
1.52 Ac.

E. VICKI
603-1144
3.00 Ac.

OH DONOHUE
672-723
1.50 Ac.

CAUNTER
603-1079
1.50 Ac.

H.H. BROWNE
641-165
1.50 Ac.

P.B. MCGREEVY
617-1211
1.50 Ac.

150 Ac.

150 Ac.

150 Ac.

150 Ac.

150 Ac.

150 Ac.

150 Ac.

150 Ac.

150 Ac.

150 Ac.

150 Ac.

150 Ac.

150 Ac.

150 Ac.

150 Ac.

150 Ac.

150 Ac.

150 Ac.

150 Ac.

150 Ac.

150 Ac.

150 Ac.

150 Ac.

150 Ac.

150 Ac.

150 Ac.

150 Ac.

150 Ac.

150 Ac.

150 Ac.

150 Ac.

150 Ac.

150 Ac.

150 Ac.

150 Ac.

150 Ac.

150 Ac.

150 Ac.

150 Ac.

150 Ac.

150 Ac.

150 Ac.

150 Ac.

150 Ac.

150 Ac.

150 Ac.

150 Ac.

150 Ac.

150 Ac.

150 Ac.

150 Ac.

150 Ac.

150 Ac.

150 Ac.

150 Ac.

150 Ac.

150 Ac.

150 Ac.

150 Ac.

150 Ac.

150 Ac.

150 Ac.

150 Ac.

150 Ac.

150 Ac.

150 Ac.

150 Ac.

150 Ac.

150 Ac.

150 Ac.

150 Ac.

150 Ac.

150 Ac.

150 Ac.

150 Ac.

150 Ac.

150 Ac.

150 Ac.

150 Ac.

150 Ac.

150 Ac.

150 Ac.

150 Ac.

150 Ac.

150 Ac.

150 Ac.

150 Ac.

150 Ac.

150 Ac.

150 Ac.

150 Ac.

150 Ac.

150 Ac.

150 Ac.

150 Ac.

150 Ac.

150 Ac.

150 Ac.

150 Ac.

150 Ac.

150 Ac.

150 Ac.

150 Ac.

150 Ac.

150 Ac.

150 Ac.

150 Ac.

150 Ac.

150 Ac.

150 Ac.

150 Ac.

150 Ac.

150 Ac.

150 Ac.

150 Ac.

150 Ac.

150 Ac.

150 Ac.

150 Ac.

150 Ac.

150 Ac.

150 Ac.

150 Ac.

150 Ac.

150 Ac.

150 Ac.

150 Ac.

150 Ac.

150 Ac.

150 Ac.

150 Ac.

150 Ac.

150 Ac.

150 Ac.

150 Ac.

150 Ac.

150 Ac.

150 Ac.

150 Ac.

150 Ac.

150 Ac.

150 Ac.

150 Ac.

150 Ac.

150 Ac.

150 Ac.

150 Ac.

150 Ac.

150 Ac.

150 Ac.

150 Ac.

150 Ac.

150 Ac.

150 Ac.

150 Ac.

150 Ac.

150 Ac.

150 Ac.

150 Ac.

150 Ac.

150 Ac.

150 Ac.

150 Ac.

150 Ac.

150 Ac.

150 Ac.

150 Ac.

150 Ac.

150 Ac.

150 Ac.

150 Ac.

150 Ac.

150 Ac.

150 Ac.

150 Ac.

150 Ac.

150 Ac.

150 Ac.

150 Ac.

150 Ac.

150 Ac.

150 Ac.

150 Ac.

150 Ac.

150 Ac.

150 Ac.

150 Ac.

150 Ac.

150 Ac.

150 Ac.

150 Ac.

150 Ac.

150 Ac.

150 Ac.

150 Ac.

150 Ac.

150 Ac.

150 Ac.

150 Ac.

150 Ac.

150 Ac.

150 Ac.

150 Ac.

150 Ac.

150 Ac.

150 Ac.

150 Ac.

150 Ac.

150 Ac.

150 Ac.

150 Ac.

150 Ac.

150 Ac.

150 Ac.

150 Ac.

150 Ac.

150 Ac.

150 Ac.

150 Ac.

150 Ac.

150 Ac.

150 Ac.

150 Ac.

150 Ac.

150 Ac.

150 Ac.



SCALE 1" = 300'

SEC. 7

SEC. 6

SEC. 15

A	B	C	D
E	F	G	H
I	J	K	L
M	N	O	P

MONTVILLE TWP

JAN 1982

184-29 V&D Gigholli 4924A S.125A
K.M. DiFranco
687-176
OWN SERVICES ASSOC.

367-107
587-809

263-43
5A 70A

431-912 1545A
587-801

C. PERKO

R. & M. DiFranco
40.A. 508-3

233A

R. E. Davis

J. D. Calendine
587-600
679-5

A. E. C. Perko

C. Perko

418-953

246-37
580-1166

± 123.50 A

H. Pierman
617-166

G. Brown

L. SCHUTTUM
L. F. & E. SWANSON

277-245
512-148

243-417
361-39

20 A

108.74 A

50 A

63.55 A

661-57
D. DiFranco
A. DiFranco
B. PERKO
F. EISENBERRY

B. Moore

451-447
512-148
2.88

260-418
657-385

464-104

20 A

M. O. JOHNSON & F. OMAHEN

665-700

524-1059
20 A

15 A

11.12 A

5A

A. Daniels
A. JERRY

J. Cay

25.24 Ac.

25.37 Ac.

25.49 Ac.

571-907

571-905

A. & M. ROT

A. C. M. KOZELJ

J. S. M. JARC

OPATERNY
(90-88)

B. L. H. RALLS
671-644

671-607

558-692
M. J. D. FECKANIN

359-542
K. KATYNS

247-507
593-1199

50 A

70.57 A

L. H. & K. OHRALIK

213-40 2A
471-806 2A
SYMBORZ
600-807
600-687
600-687

673-1305
463-320
B. A. & D. LICHT
70.45 A

556-695
643-689

35 A

M. J. RESS

492-512
40 A
607-658
S. DISTEL

454-307
R. M. McKEON
66.38 Ac.

E. F. & E. WEBER
524-264
67.358 Ac.

30.29 Ac.

S. Ziegler

457-402, 404

S. ZIEGLER
22.8
425-84

E. S. Bystrom
22.8
425-84

SEE DETAIL SHEET 10 Q

263-43

SEC. 6

220-374

M. A. LABRICK
J. Spirka

65A

70 A

R. E. Davis

671-1109

40 A

35 A

J. D. Calandine
631-1278
679-5

431-607

LIB PNIENSKI

34 A

270-465
582-84

G. P. Heller

T. B. HERTNA

40 A

418-993

O. P. PASOS
653-189 200A

303AC

50 A

P. KIEBLER 609-825

48.44 A

G. Brown

861 S. R. WELLS
100ac 674-124

G. & M. Trask

11.44 A

F. L. REYNOLDS
665-189 20

463-269
574-857
601-322
247-1252

H. Piernah
617-921

258Ac

188-240

617-166

55.91 Ac.

H. Piernah

H. STOLTZ II
565-106

36772

5A
469-778

J. A. Majka

50A

A. Erben

234-318

3.25 A

206-442

98 A

730
SINKOVIC
574-62

11.3Ac.

174-622

24.34Ac.

665-201

469-728

J. L. MASCOLELLA

263-257

J. L. MASCOLELLA

409-440

1-093A

840 Ischman

480-391

2A

51-658

W. SCHWETS

220-288 et al.

117A

1.50

43A

237-455
W. J. Dombrowski

15A

15A

434-553

33.75 A

20A

152-188

K. M. Kiparski

M. Lankford

24 I. Bosse

D. Geisman

SEC. 15

312-457-B
637-959

367-417
392-345

O. LOZAR R. KACZAK
449-593, 595
472-597

31.27 A

427-70

138A

33 A

J. Trask et al.

546-347

C. VALLA

399-1012

61.76 A

P. Berardinelli

12 A

50 A

W. MASUNG

24.71 A

S. Zadnik

A S H T A B U L A C O U N T Y

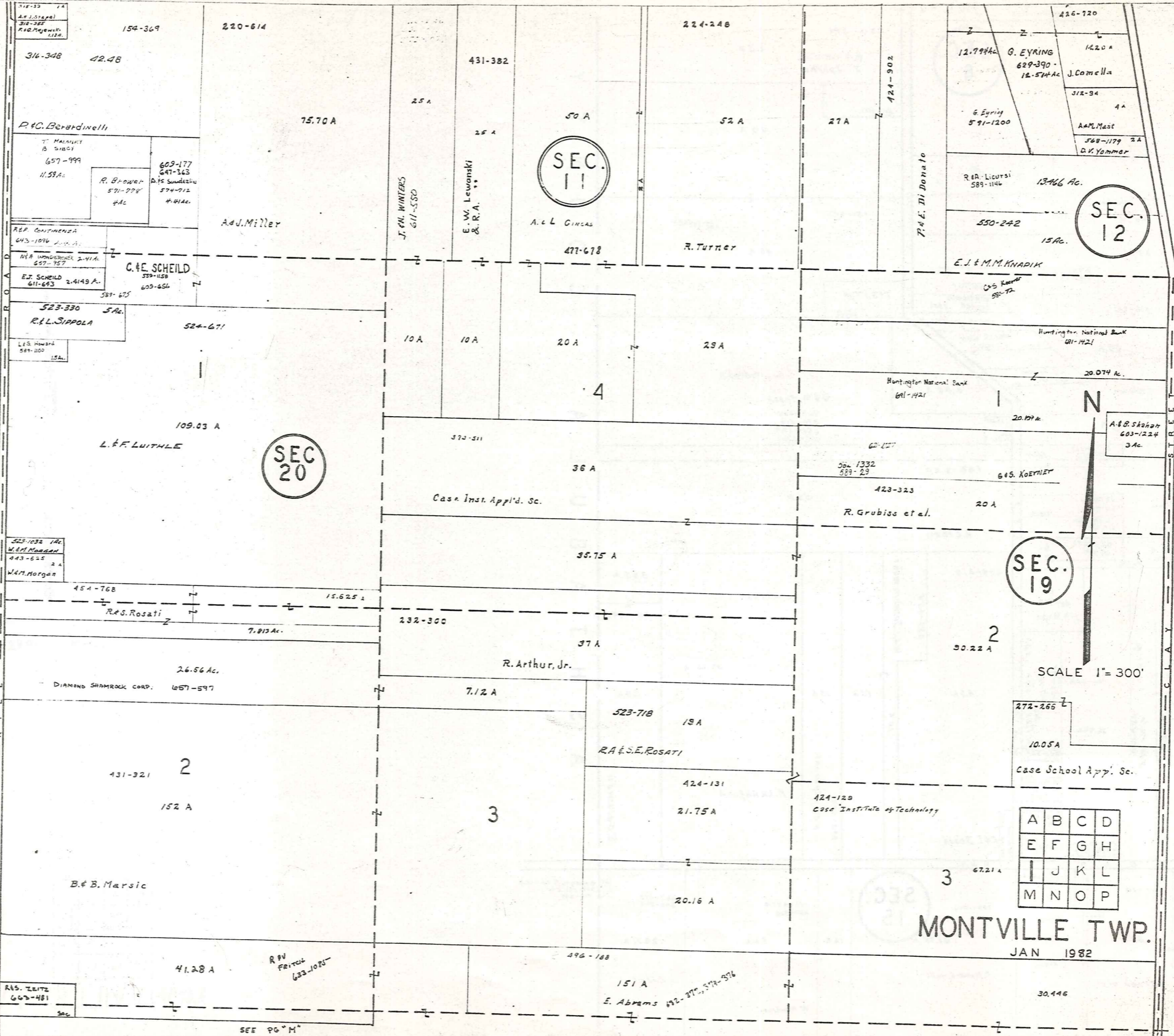
N

SCALE 1" = 300'
JAN 1982

A	B	C	D
E	F	G	H
I	J	K	L
M	N	O	P

MONTVILLE TWP
303

H A M B D E N T O W N S H I P



SEC. 11

SEC. 12

SEC. 20

SEC. 19

A	B	C	D
E	F	G	H
I	J	K	L
M	N	O	P

MONTVILLE TWP.
JAN 1982

SCALE 1" = 300'

SEC. 12

SEC. 13

SEC. 19

SEC. 18

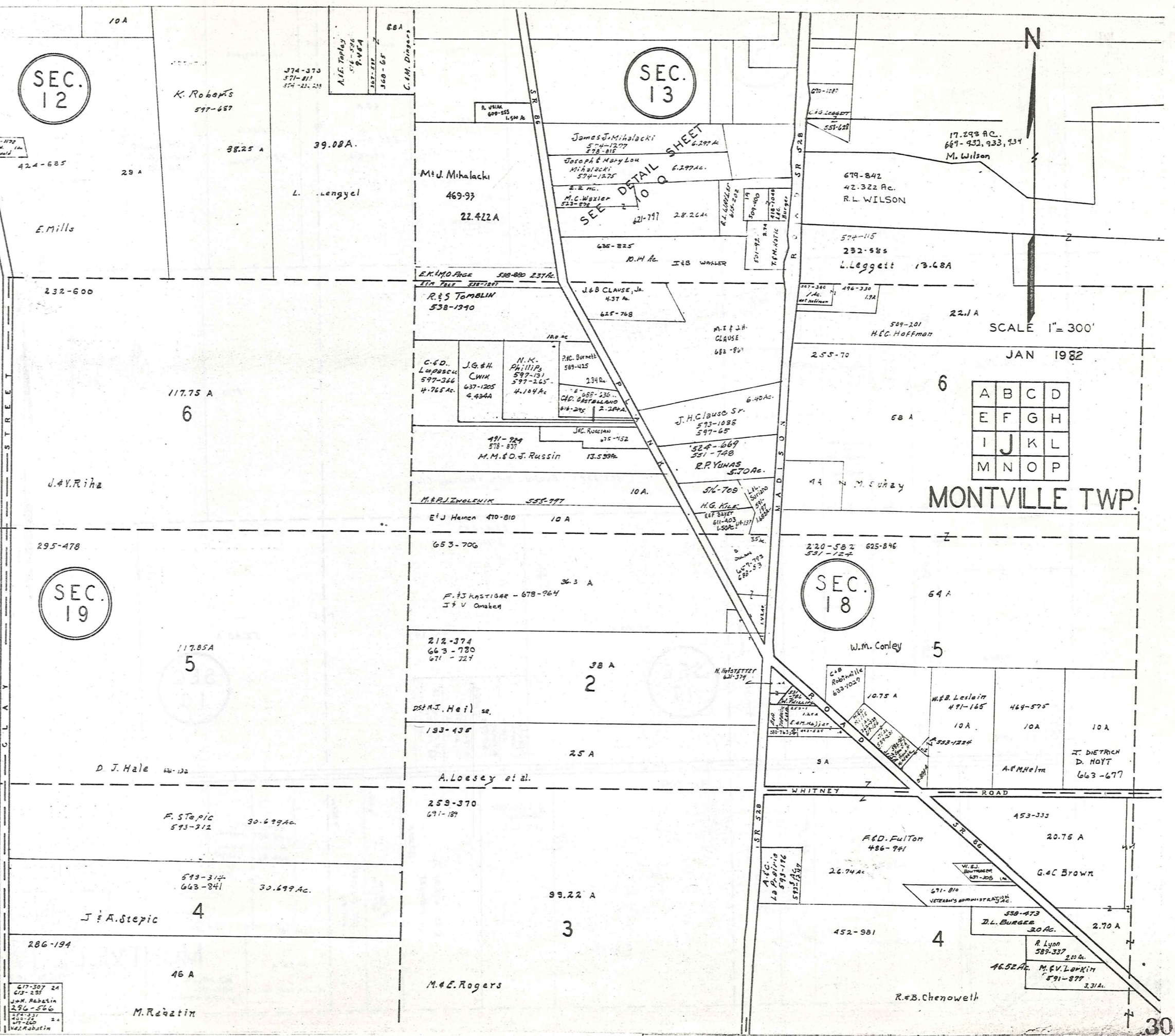
SEE DETAIL SHEET 10 Q

A	B	C	D
E	F	G	H
I	J	K	L
M	N	O	P

SCALE 1" = 300'

JAN 1982

MONTVILLE TWP.



617-307 24
618-235
J.M. Rabatin
286-566
174-337
450-22 24
471-400
W.L. Rabatin

SEE
DETAIL SHEET
10 Q

247-507

SEC.
14

SEC.
15

50 A

70.57 A

70.45 A

35

40 A

459-402,404

S. Ziegler
26.24 Ac
425-86

E.F.E. WEBER
524-266
67.352 Ac.

66.38 Ac.
454-307
F.M. McKeon

J.S. Dretzel
492-512

A.J. Wiksa

673-1305
463-330
A.A. & D. LICHT

A.L.-H.K. Ohralik

R.L. WILSON
72-32 E.B.C.

245-8
571-1368

6

10 A

5

6

50.23 A

37914A

523-725

110.50 A

37.19

37.19 Ac.
459-402,404

T.E. Stone

EUCLID RIFLE
AND
HUNTING CLUB
647-403

295-397 Euclid Rifle & Hunting Club

10 A

2

4

2

30.50 A

9.64 A

55.50 A

46.50 A

52.69 A

SCALE 1"=300'

SEC.
17

SEC.
16

R.M. GAREY
611-881
1.09 A.

R.M. GAREY
611-879
.75 A

J. Yambor Jr
541-34
2.00 Ac.
G. Yambor
611-498 3.000 A.
S. Yambor
548-657
3.000 A.
S. McDonald III
325-577-26
3 A.C. 603-34

H. V. Borecker

T. M. KIKULSKY 4-24-308

W H I T N E Y R O A D

25 A

453-333

42.50 A

3

82 Ac.

M.A. GYETKO
14.90 Ac
672-1032

C. B. GYETKO JR.
609-557 20.00 A

R.C.M. JACKSON
SUB 187T
807-1817 7.44 Ac
609-46 604-293

35.26 A

A	B	C	D
E	F	G	H
I	J	K	L
M	N	O	P

G.C. Brown

E. Gyetko

226-59
255-59
558-1044

MONTVILLE TWP
JAN 1982

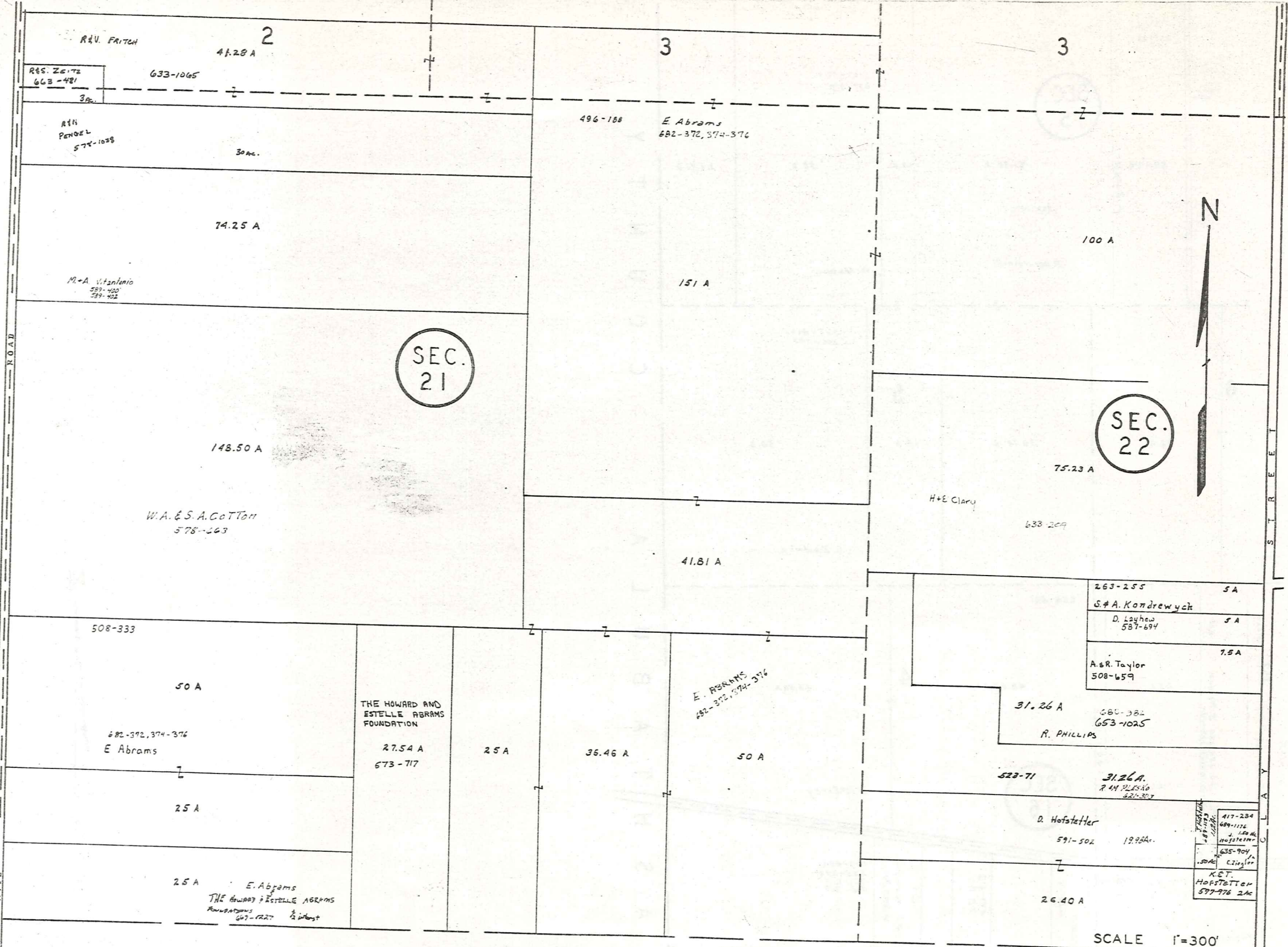
14.74 A
H. FALLON, JR

461-794,797
684-439
L.W. & P.A. KOVRCH

306

1.25 A

H A M B D E N T O W N S H I P



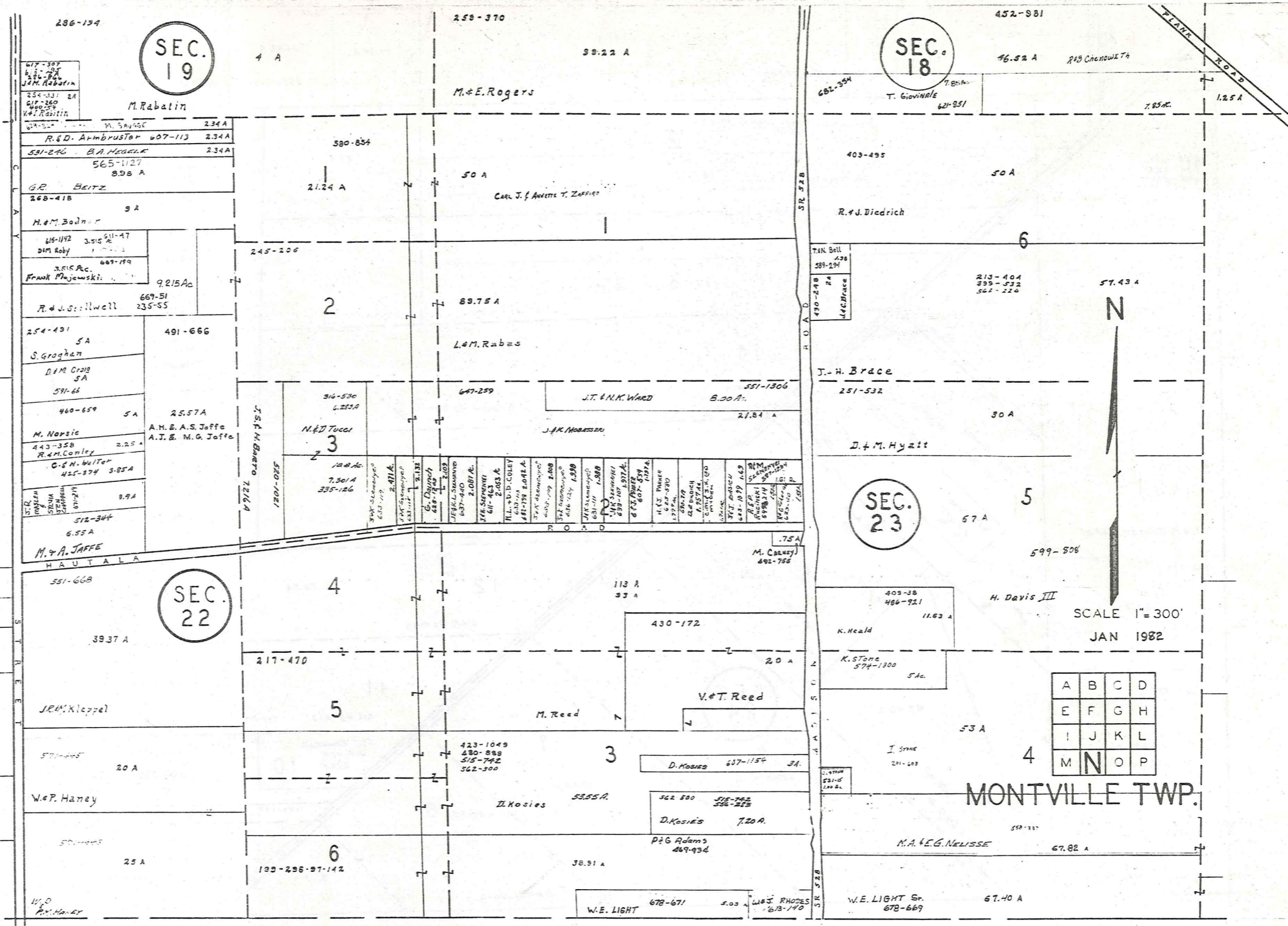
H U N T S B U R G T O W N S H I P

308

SCALE 1"=300'

A	B	C	D
E	F	G	H
I	J	K	L
M	N	O	P

MONTVILLE TWP
JAN 1982



SEC. 19

SEC. 18

SEC. 22

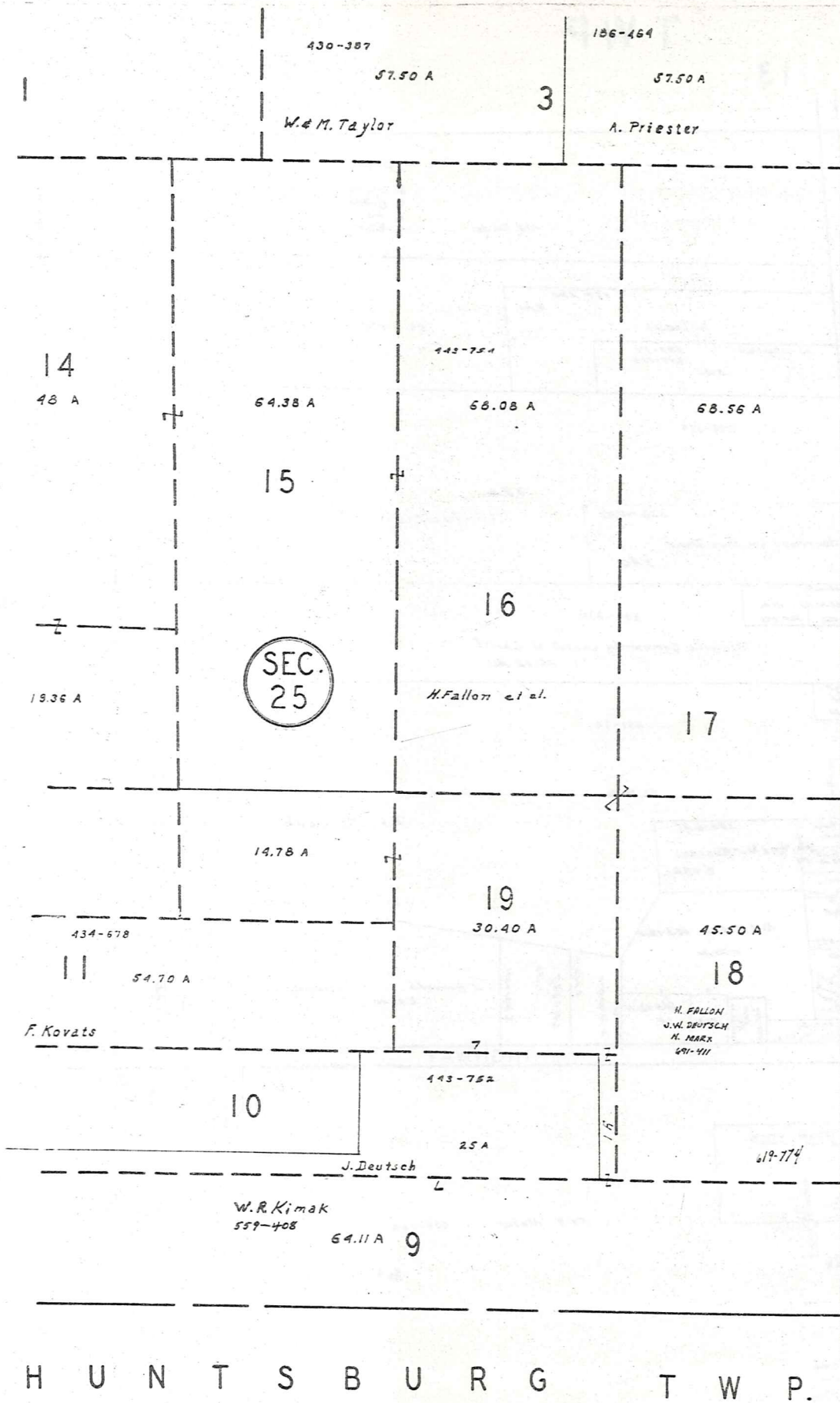
SEC. 23

A	B	C	D
E	F	G	H
I	J	K	L
M	N	O	P

MONTVILLE TWP.

HUNTSBURG TOWNSHIP

SCALE 1" = 300'
JAN 1982



SCALE 1" = 300'
JAN 1982

A	B	C	D
E	F	G	H
I	J	K	L
M	N	O	P

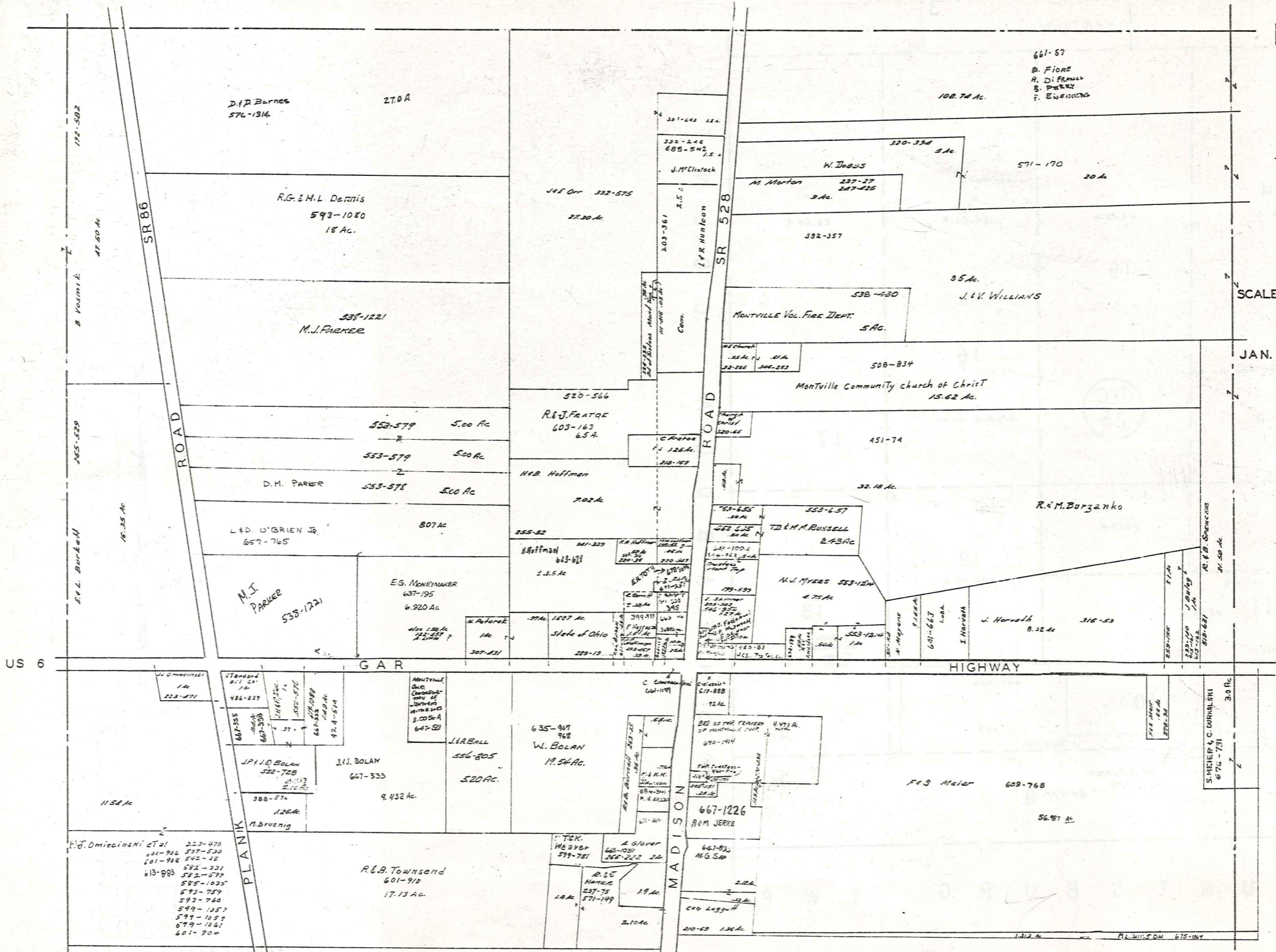
MONTVILLE TWP.
311

MONTVILLE SECTION 13 TWP



SCALE 1" = 200'

JAN. 4, 1982



US 6

312

10-Q

Explanation and Use Sheet for Geauga County, Ohio

SAMPLE (PARTIAL) COUNTY INDEX MAP



- Township Boundary
- Township Name
- Village Boundary
- Village Name
- Tract Lot Number
- Street Name
- Acreage
- Deed Book & Page
- Owners Name
- Denotes Continous Ownership

SAMPLE (PARTIAL) MAP PAGE



- Map Page Number
- Village Name
- Village Boundary
- Township Name

SAMPLE (PARTIAL) MUNICIPALITY INDEX MAP



- Street Name
- Village Name
- Township Name

USE OF THE MAP VOLUME

1. LOCATE THE GENERAL AREA OF INTEREST ON THE COUNTY INDEX MAP, ATLAS PAGE 'B', AND NOTE THE MUNICIPALITY NAME (TOWNSHIP OR VILLAGE).
2. REFER TO THE TABLE OF CONTENTS, ATLAS PAGE 'C', AND NOTE THE BEGINNING ATLAS PAGE NUMBER FOR THE MUNICIPALITY OF INTEREST.
3. TURN TO THE PAGE INDICATED. ON THIS PAGE WILL APPEAR AN INDEX MAP FOR THAT MUNICIPALITY.
4. LOCATE THE GENERAL AREA OF INTEREST AND NOTE THE MAP PAGE NUMBER. THIS MAY BE EITHER A LETTER OR A NUMBER.
5. MAP PAGES ARE IN ALPHABETICAL (OR NUMERICAL) SEQUENCE FOLLOWING THE MUNICIPALITY INDEX MAP. FOLLOW SEQUENCE TO THE MAP PAGE INDICATED.
6. LOCATE SPECIFIC PARCEL OF INTEREST AND NOTE THE DESIRED INFORMATION.

NOTE: ON SOME MAPS YOU MAY BE REFERRED TO A DETAIL SHEET SHOWING AN ENLARGEMENT OF THE AREA. THESE MAPS ARE FOUND AT THE END OF THE REGULAR MAP PAGES IN EACH MUNICIPALITY IN EITHER ALPHABETICAL OR NUMERICAL SEQUENCE.

NOTE: CHARDON VILLAGE HAS TITLE SHEETS. TO LOCATE OWNERS NAME, NOTE THE PARCEL NUMBER, REFER TO THE TITLE PAGE FOLLOWING THE MAP OF INTEREST, FOLLOW NUMERICAL SEQUENCE TO THE PARCEL NUMBER OF INTEREST AND NOTE THE DESIRED INFORMATION. IN ALL OTHER MUNICIPALITIES THE OWNERS NAME APPEARS ON THE MAP PAGE.

This book is the property of REAL ESTATE DATA, INC. and is distributed by REDI under a leasing arrangement requiring return to REDI upon termination of the lease. REDI reserves the right to reclaim this book if found in the possession of any firm or person where possession was obtained through any unauthorized source.